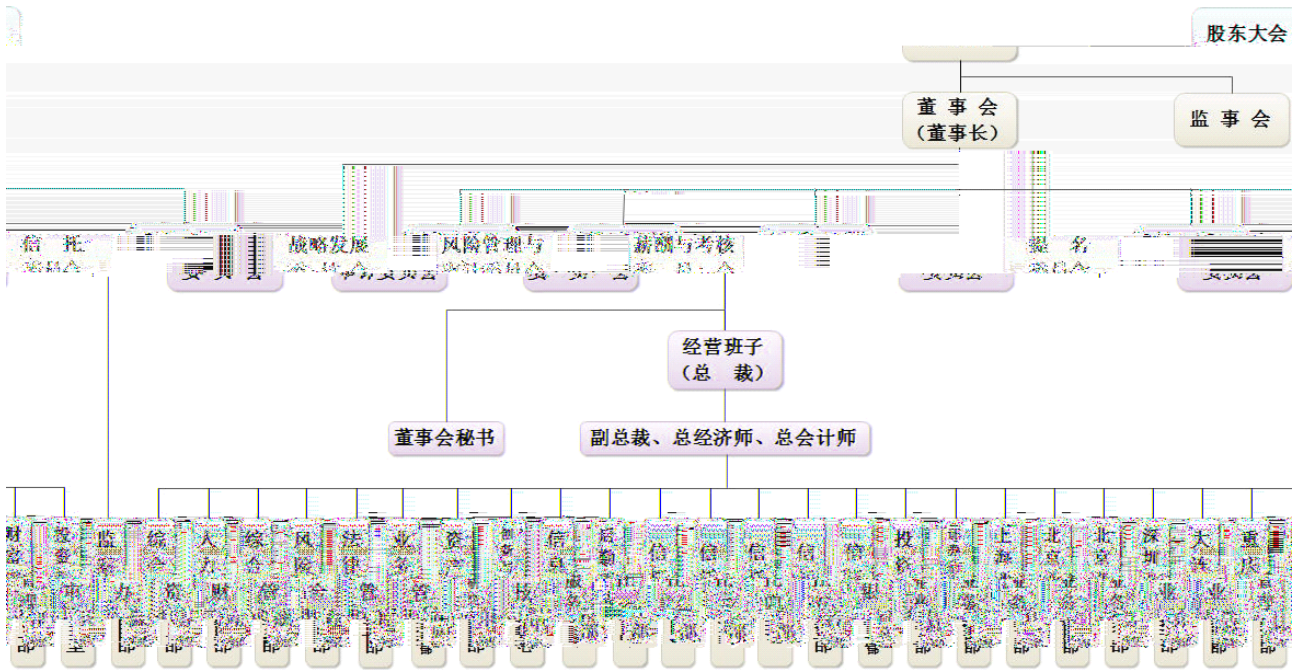




2014 03

--	--



	2013	2012	(%)	2011
/				
/				
%				
	2013	2012	(%)	2011

	2013	2012	2011	

20%

	2013		2012		%	
		%		%		

	2013		2012		%	

1

2

3.

4.

1

2

	()		(1)		(2)	(3) (2)/(1)				

3

2014

	,06 ,741.1	100.00		,06 ,741.1	100.00

5

1

2

1

			%

2

3

		2,75 ,572.0

)	()

())	()

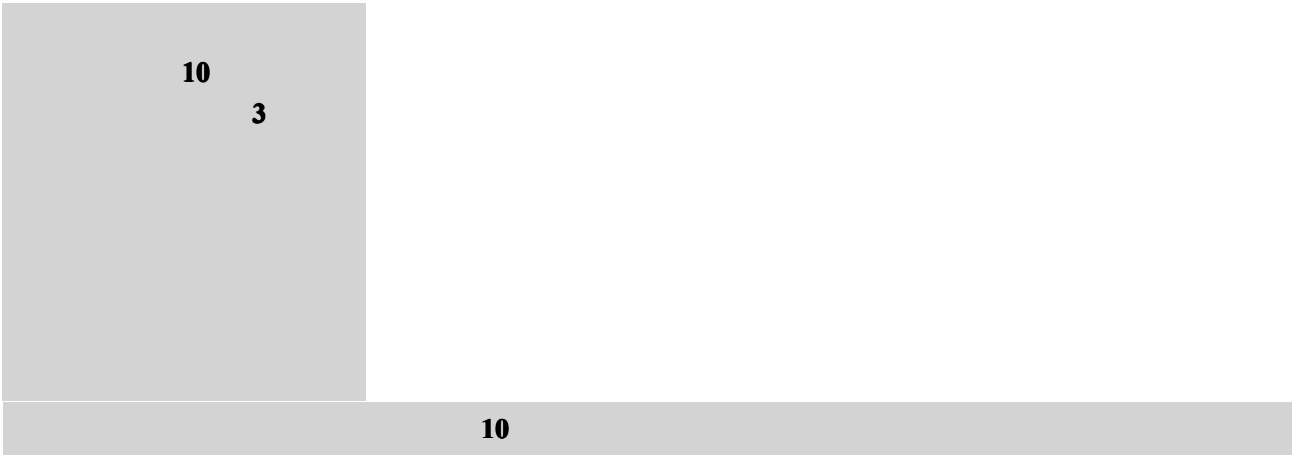
1

2

3

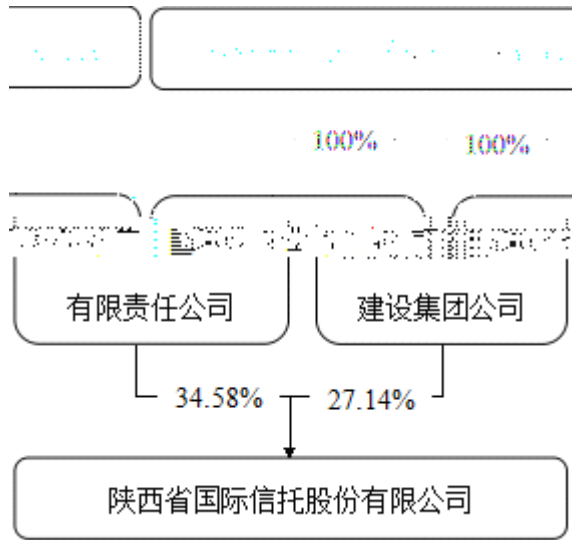
5%

5%



4	
---	--

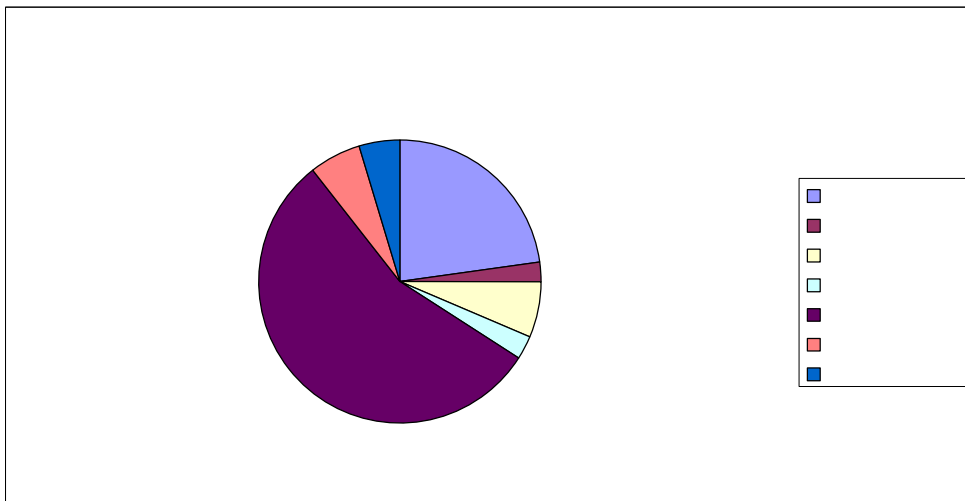
	/				

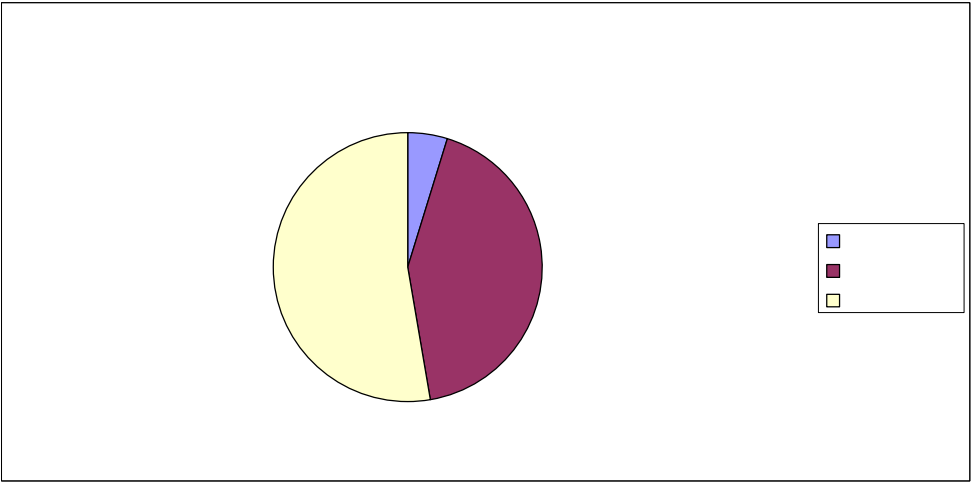


10%

	/				





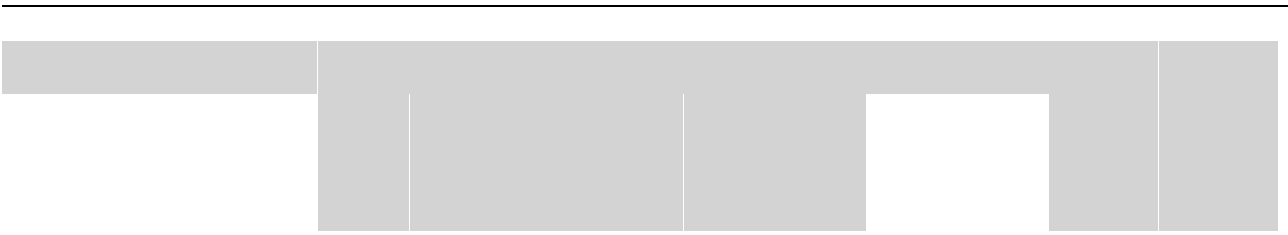


6

--	--	--	--	--	--	--	--

2013

--	--



1

2

3

4

5

1

2

6

1

2

3

7

1

2

1

2

10

1

2



3

4

5

6

7

11

1

2

3

12

13

1

2

3

4

14

15

1

2

3

		%	

4

16

17

1

1

20

1

2

3

4

21

22

23

1

2

24

25

26

1

2

3

4

27

1

2

2

1

2

2

1

2

3

30

31

32

33

1

2

34

1

2

35

1

2

3

1

2

3

4

5

6

7

10

1

2

3

1

2

3

4

5

6

7

2

3

4

5

5

5

6

				(%)

7

10

10

11

12

13

14

1

2

3

4

5

15

1

2

16

17

1

1

						(%)	(%)				

2

1

3

4

5

6

21

22

23

24

25

26

1

2

27

2

2

1

2

30

3

3

40

41

1

2

5

5

3

4

42

43

44

45

46

47

4

4

50

51

52

53

--	--	--	--	--

54

55

56

57

5

1

2

3

4

5

5

60

61

62

2

66

67

1

2

			/	

6

6

70

72

1

2

3

4

5

6

2

3

4

5

1

2 /

3

4

5

6

7

6

1

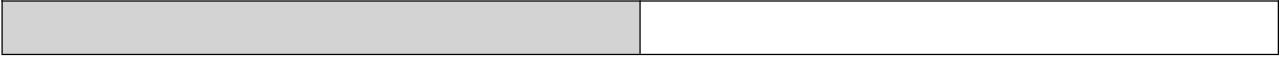
2

1

2

1

2



3

1

2

3

4

5

6

7

2

3

4

5

5

5

6

				(%)

7

2

1

						(%)	(%)				

2

3

1

2

1

2

1

2

3

3

	%		

4

